

PM 51.5 SP



Platinum Series



DESCRIPTION TECHNICAL FEATURES

Up to 6 hydraulic extensions, PM 51.5 SP series ensure high performance, maximum efficiency and high level of reliability.

Articulation with the **exclusive PM link system**, increase the crane efficiency. The crane can operate with same performance and constant outreach, in every vertical configuration of the crane.

The **New Power Tronic Advance Plus** and the **new radio remote control with display** ensure extreme precision and high safety. Maximum stability thanks to XL outriggers (6,6 m) or XXL (8 m).

15° negative angle on secondary boom to work in narrow spaces with maximum flexibility.

Thanks to **continuous rotation** it is possible to work with maximum productivity and time saving.



Power Tronic Advanced Plus



Remote controlled outriggers and MCS system



Continuous rotation system

STANDARD EQUIPMENT

POWER TRONIC ADVANCES PLUS

Maximum crane performance, maximum safety in every working condition

PROPORTIONAL HYDRAULIC CONTROL VALVE BLOCK COMPENSATED

HYDRAULIC OUTRIGGER BOOMS

EXTENSION SEQUENCE BOOMS

CONTINUOUS ROTATION SYSTEM

DOUBLE LINKAGE

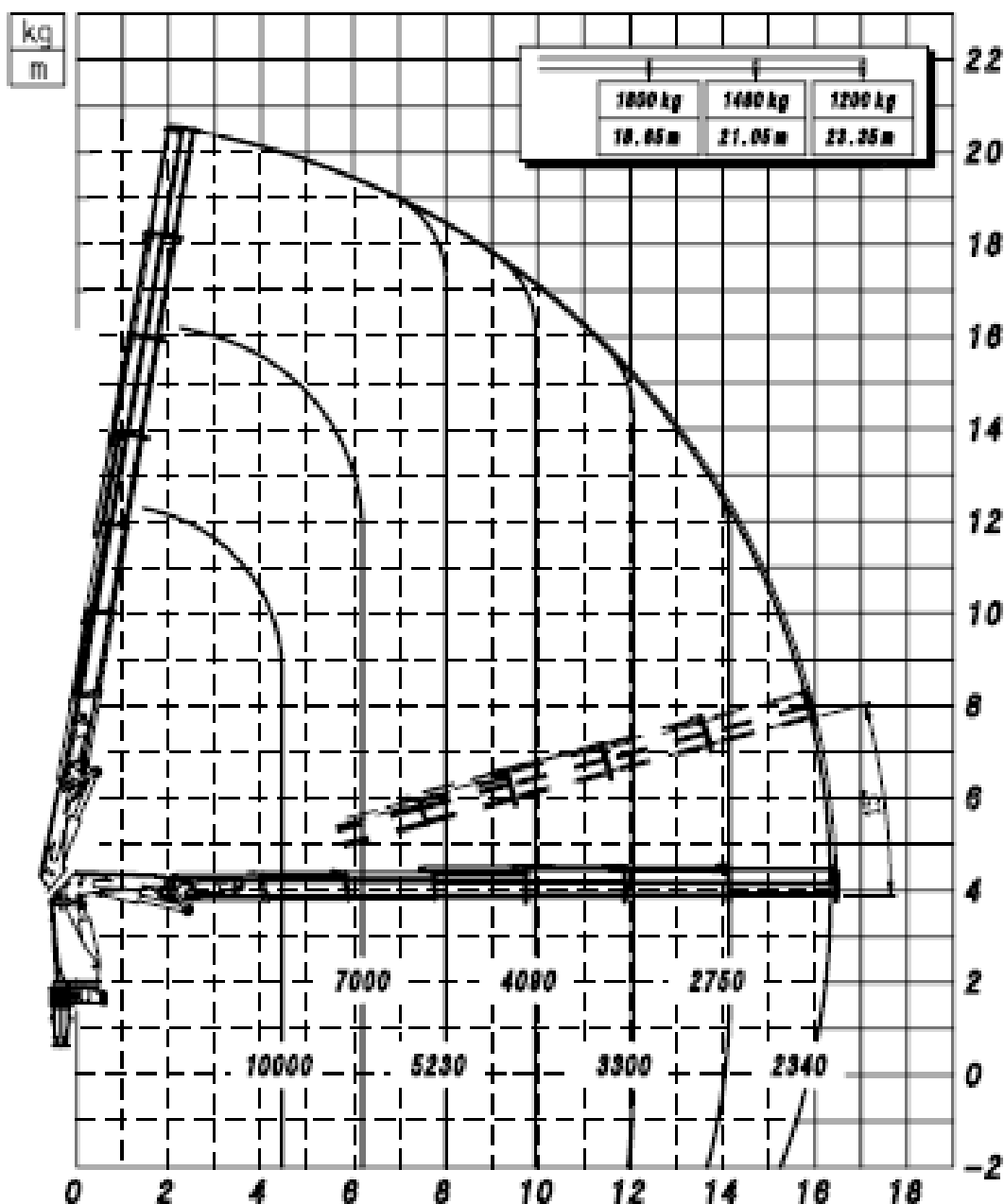
MULTIFUNCTION RADIO REMOTE CONTROL

PM 51.5 SP



truck mounted cranes

** 51526 SP **



PM 51.5 SP



<u>PM 51.5 SP - G163</u>		51522 SP	51523 SP	51524 SP	51525 SP	51526 SP
Max. lifting moment	kN m	485	452	452	442	436
	t m	49,4	46,1	46,1	45	44,5
Max. dynamic moment	kN m	620				
Max. hydraulic reach						
Horizontal	m	8,10	9,75	11,90	14,15	16,50
Vertical	m	12,75	14,30	16,35	18,45	20,70
Max. reach with manual extensions						
Horizontal	m	----	----	21,20	23,55	23,55
Vertical	m	----	----	25,15	27,35	27,35
Hydraulic system						
Max. oil flow	l/min	80 ÷ 100	80 ÷ 100	80 ÷ 100	80 ÷ 100	80 ÷ 100
Max. pressure	MPa	34,5	34,5	34,5	34,5	34,5
Tank capacity	l	200	200	200	200	200
Slewing system						
Slewing angle	°	Cont.	Cont.	Cont.	Cont.	Cont.
Slewing moment	kN m	44	44	44	44	44
Max. working heel (*)	% (°)	8,7(5)	8,7(5)	8,7(5)	8,7(5)	8,7(5)
Standard crane weight with non full tank	kg	4365	4580	4825	5045	5245
LC crane weight with non full tank	kg	----	----	----	----	----
Max. power absorbed by the hydraulic pump	kW	51,1	51,1	51,1	51,1	51,1
Maximum force exerted on ground by each outrigger	kN	195	195	195	195	195
Specific pressure exerted by each outrigger with a Ø 200 mm plate	MPa	6,2	6,2	6,2	6,2	6,2
Boom unit extension time of a standard machine (plus disabled)	sec.	19	28	37	45	53
Boom unit extension time of a LC machine (plus disabled)	sec.	----	----	----	----	----

PM 51.5 SP



truck mounted cranes

OPTIONAL

HYDRAULIC WINCH ON CRANE

HOSE REEL

180° HYDRAULIC SWING UP
OUTRIGGERS

EQUIPMENTS SUMMARY

EQUIPMENTS	Standard	Optional
Continuous slewing	O	
Double linkage	O	
Hydraulic outrigger booms	O	
Remote controlled stabilizers (MCS System)*		O
180° Hydraulic swing up outriggers		O
Extension sequence booms	O	
Oil cooler	O	
Proportional hydraulic control valve block compensated	O	
Radio remote control with display	O	
Regenerative valve	O	
Hydraulic winch on crane		O
Hose reel		O
Stability Power System*		O
Safety Kit for outriggers*	O	
Ball-joint outrigger plates *		O
4 metres alarm sensor with control panel in cab *		O
Slewing limiter	O	
LMU Device: control system for manual extensions*	O	
LED work lamp		O
Top seat with radio control support		O

* Compulsory for totally CE configurations



In accordance to
the EU safety
standards



Certified quality
management system
UNI ISO 9001:2008



In accordance to
HD5S2 standard



3 years of warranty on
the structural parts